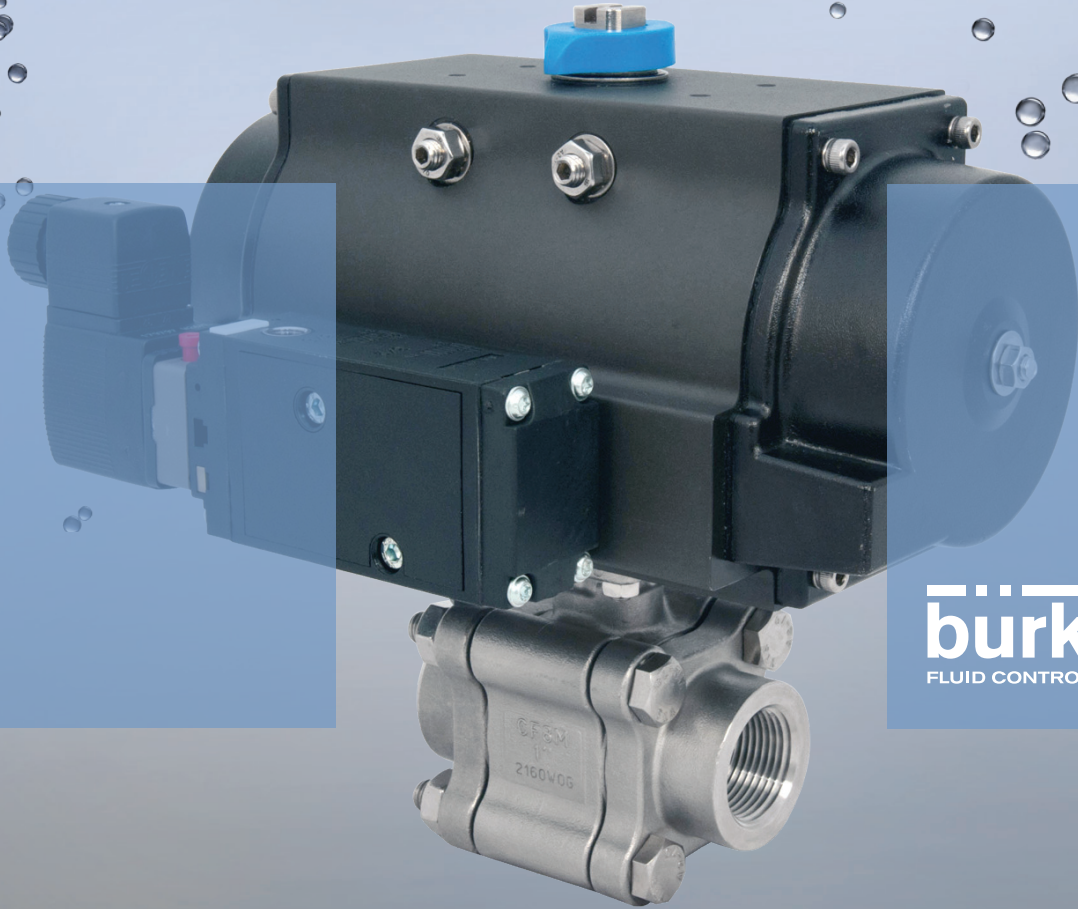


# Ball Valve Program



**bürkert**  
FLUID CONTROL SYSTEMS

# Ball Valve Solutions

## The Vision for Process Automation

### Burkert Quality, Ball Valve Solutions

Burkert connects a world of process solutions to work efficiently.

An otherwise unattainable synergy of hardworking valve elements, process actuation, sensors and networked communication provide a true single source for remarkable attractive systems, now includes a full range of quarter turn ball valve choices.

A knowledge of both process applications, process engineering, and specific control and automation technology means we are the specialist you can trust. We have decades of global experience and we have always been positioned at the forefront of the process interface.

Our initial process valve experience in linear actuation automation has been applied to quarter turn actuation allowing Burkert to address the process environment as a whole. Our system approach is designed to secure both your safety and your competitive advantage. Thorough consultation, engineering support, selection and commissioning in application environments which traverse a spectrum of processing industries means we only aim to present you with only the most appropriate solution.

Burkert products and systems can be used wherever fluids need to be measured, controlled, and regulated. Ball valves enhance our envelope in pressure, temperature and size.

Welcome our new capability!

#### Applications:

- Hygienic Processing
- Steam
- Water Treatment
- Cooling Systems
- Gas Handling

#### 2-Ways



Type 2651 Standard



Type 2654 Standard



Type 2654 Clamp



Type 2654 High Pressure

#### 3-Ways and Multi-Ports



Type 2651 3-Way



Type 2651 Multi-Port

#### ANSI Flange and Custom



Type 2651 ANSI Flange



Custom Solution



# Solutions



**Choose your valve and end connection  
1/4" – 12" size**

With in-house machine and welding capabilities, we're able to offer quick solutions to non - standard requests.



**Actuate/Control  
Pneumatic or Electric**



**Type 2051  
Pneumatic rotary drive**

- Single or Double-acting
- NUMUR and ISO 5211 interfaces



**Type 3003  
Electrical Rotary Actuator  
ON/OFF analog signal input**

- Direct mounting on quarter-turn valves
- Manual override standard
- Adjustable limit switches
- Multi-voltage



**Type 3005  
Electrical Rotary Actuator  
ON/OFF analog signal input**

- Direct mounting on quarter-turn valves
- Manual override standard
- Corrosion resistant
- Protection class IP67



**Type 3004  
Explosion Proof Actuator  
ON/OFF or analog signal input**

- Direct mounting on quarter-turn valves
- Manual override standard
- Corrosion resistant
- ATEX II 2 GD Ex d II B T6



**Top It Off**

**Switch Packages**



**Bus Connections**



**Positioners  
Process Controllers**



**Pilot Valves**

- Manifold Style (8644, 8640)
- Namur Mount (6519, 5470)



**Complete System  
Control Solutions**

Burkert delivers and commissions complete solutions for process environments including hazardous locations.

**Burkert Fluid Control Systems**

**USA**

2572 White Road  
Irvine, CA 92614  
Phone: 949-223-3100  
Fax: 949-223-3198

SystemHaus  
2915 Whitehall Park Drive, Suite 100  
Charlotte, NC 28273  
Phone: 704-504-4440  
Fax: 704-504-3047

[marketing-usa@burkert.com](mailto:marketing-usa@burkert.com)  
[www.burkert-usa.com](http://www.burkert-usa.com)

**Canada**

5002 South Service Road  
Burlington, ON L7L 5Y7  
Phone: 905-632-3033  
Fax: 905-632-3833

[sales.ca@burkert.com](mailto:sales.ca@burkert.com)  
[www.burkert.ca](http://www.burkert.ca)