

Preparation Units for Compressed Air

- Modular construction
- Compact design
- Simple mounting
- Corrosion-resistant casings

Maintenance devices for compressed air are put together according to need from the individual devices

- Filter water discarder
- Membrane pressure control valve
- Mist lubricator
- Manometer.

Notes

Various model ranges are on offer, depending on the conductor connector. Therefore the shape of the illustration in photo and drawing is somewhat different.

The securing bracket is laid out differently, depending on the conductor connection (see securing bracket).

Technical data	
Body material for G 1/8 and 1/4 for G1/4, 3/8, 1/2, 1 (see ordering chart p. 2)	Plastic Metal
Fluids	Compressed air
Fluid temperature	0 to +50 °C to 10 bar (other temperature ranges on request)
Ambient temperature	0 to +50 °C
Max. input pressure	0 to 10 bar / 0 to 16 bar
Max. output pressure	0.5 to 10 bar / 0.5 to 12 bar
Range of adjustment	0.5 to 10 bar / 0.5 to 12 bar
Installation	By means of screw thread connection without fittings

Pressure data [bar]: Overpressure with respect to atmospheric pressure

Flow rate specifications max. at $P_2 = 6.3$ bar
and $\Delta p = 1$ bar

Other versions on request

Ordering charts for maintenance devices for compressed air

Three-part maintenance unit

Version	Body material	Port connection	Max. input pressure [bar]	Q max. at P ₂ = 6.3 bar and Δp = 1 bar [l/min]	Item no.
Three-part maintenance unit TWG002	plastic	G 1/4	10	440	784 125
		G 1/4	16	825	784 126
	metal	G 3/8	16	850	784 127
		G 1/2	16	1900	784 128
		G 3/4	12	7,900	789 499
		G 1	12	12,580	789 500

Two-part maintenance unit and filter controller without manometer

Version	Body material	Port connection	Max. input pressure [bar]	Q max. at P ₂ = 6.3 bar and Δp = 1 bar [l/min]	Item no.
Two-part maintenance unit TWG001	plastic	G 1/8	10	360	784 131
		G 1/4	10	470	784 132
	metal	G 1/4	16	890	784 133
		G 3/8	16	890	784 134
		G 1/2	16	1,950	784 135
		G 3/4	12	8,600	789 501
Filter controller without manometer TWG004	plastic	G 1/8	10	400	784 138
		G 1/4	10	580	784 139
	metal	G 1/4	16	2,280	784 140
		G 3/8	16	3,200	784 141
		G 1/2	16	3,300	784 142
		G 3/4	12	13,200	789 503
G 1	12	19,000	789 504		

Filter water discarder, pressure control valve and mist lubricator

Version	Port connection	Q max. at P ₂ = 6.3 bar and Δp = 1 bar [l/min]	Item no.
Filter water discarder without manometer TWG006	G 1/8	1,085	784 145
	G 1/4	1,830	784 146
	G 1/4	1,440	784 148
	G 3/8	1,620	784 147
	G 1/2	4,130	784 149
	G 3/4	10,400	789 505
Pressure control valve without manometer TWG005	G 1	11,400	789 506
	G 1/8	530	784 152
	G 1/4	770	784 153
	G 1/4	2,850	784 154
	G 3/8	3,300	784 155
	G 1/2	5,000	784 156
Mist lubricator without manometer TWG003	G 3/4	14,600	789 507
	G 1	20,000	789 508
	G 1/8	865	784 159
	G 1/4	865	784 160
	G 1/4	1,400	784 161
	G 3/8	1,800	784 162
	G 1/2	5,300	784 163
	G 3/4	16,000	789 509
	G 1	17,700	789 510

DTS 1000111778 EN Version: A validé printed: 02.03.2011 Status: RL (released | freigegeben |

Dimensions [mm]

TWG002, Three-part maintenance unit, fully mounted*

* consisting of filter water discarder, membrane pressure control valve, mist lubricator, manometer, securing bracket and manual condensation emptying

Port connection	A [mm]	B [mm]	C [mm]	D [mm]	E [mm]	F [mm]	G [mm]
G 1/8	104	68.5 - 71	123	30	52	M 30 x 1.5	43
G 1/4	104	68.5 - 71	123	30	52	M 30 x 1.5	43
G 1/4	115	70	140	45	60	-	50
G 3/8	115	70	140	45	60	-	50
G 1/2	190	88	189	65	-	-	70
G 3/4	212	133	270	80	79	-	-
G 1	212	133	270	80	79	-	-

Two-part maintenance unit, fully mounted¹⁾ and filter controller without manometer

Port connection	A [mm]	B [mm]	C [mm]	D [mm]	E [mm]	F [mm]	G [mm]
G 1/8	104	68.5 - 71	83	30	52	M 30 x 1.5	43
G 1/4	104	68.5 - 71	83	30	52	M 30 x 1.5	43
G 1/4	115	70	95	45	60	-	50
G 3/8	115	70	95	45	60	-	50
G 1/2	190	88	127	65	-	-	70
G 3/4	212	133	180	80	79	-	90
G 1	212	133	180	79	79	-	90

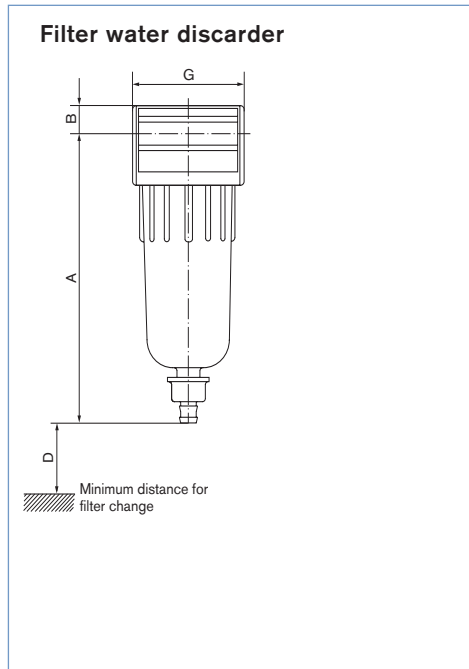
¹⁾ Maintenance unit consists of filter controller, mist lubricator, manometer, securing bracket and manual condensation emptying

TWG001, Two-part maintenance unit

TWG004, Filter controller

* Locking screw is supplied unmounted
 ** Bilateral manometer connection

TWG 006, Filter water discarder, pressure control valve and mist lubricator (all models without manometer)



Port connection	A [mm]	B [mm]	D [mm]	G [mm]
G 1/8	104	11	30	42
G 1/4	104	11	30	42
G 1/4*	115	24.5	45	50
G 3/8*	115	24.5	45	50
G 1/2*	190	20	65	65
G 3/4	212	40	80	90
G 1	212	40	80	90

* max. input pressure 16 bar

Technical data - continued				
Port connection	Max. oil charge [cm ³]	Max. input pressure [bar] ²⁾	Max. output pressure [bar] ²⁾	Max. [l/min]
G 1/8	35	10	8	300
G 1/4	35	10	8	550
G 1/4	45	16	8	825
G 3/8	45	16	8	850
G 1/2	120	16	8	1,900
G 3/4 ¹⁾	500	10	10	7,900
G 1 ¹⁾	500	10	10	12,580

¹⁾ as standard with metal casing

²⁾ Pressure data [bar]: Overpressure with respect to atmospheric pressure

TWG005, Pressure control valve

Port connection	C [mm]	A [mm]	B [mm]	F [mm]
G 1/8	42	17	68.5 - 71	M 30 x 1.5
G 1/4	42	17	68.5 - 71	M 30 x 1.5
G 1/4	50	23	70	-
G 3/8	50	23	70	-
G 1/2	65	20	68	-
G 3/4	90	49	133	-
G 1	90	49	133	-


TWG003, Lubricator

Port connection	A [mm]	B [mm]	G [mm]
G 1/8	94	51	43
G 1/4	94	51	43
G 1/4	115	24.5	50
G 3/8	115	24.5	50
G 1/2	135.5	36	65
G 3/4	190	40	108
G 1	190	40	108

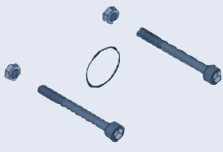
* Oil adjustment screw

Ordering charts for accessories

Bordon tube gauge, 0 - 10 bar, TAG001

	Version	Connection size for maintenance unit	Item no.
	Ø 40 mm, G 1/8	G 1/8 - G 3/8	784 209
	Ø 50 mm, G 1/4	G 1/2 - G 1	784 210
	Ø 63 mm, G 1/4	G 1/2 - G 1	784 211

Coupling set, TWG014

	Version	Connection size for maintenance unit	Item no.
	2 screws with nuts and O ring*	G 1/8 - G 1/4	784 178
		G 1/4 - G 3/8	784 179
		G 1/2	784 180
G 3/4 - G 1		789 514	

* 2 coupling sets are needed for three-part maintenance units

Miscellaneous accessories

Accessories	Version	Connection size for maintenance unit	Item no.
Branch pipe set incl. coupling set	For connecting a second load or behind the lubricator	G 1/8 - G 1/4	784 170
		G 1/4 - G 3/8	784 171
		G 1/2	784 172
TWG008		G 3/4 - G 1	789 512
Securing set	1 securing bracket and 2 screws	G 1/8 - G 1/4	784 174
		G 1/4 - G 3/8	784 175
		G 1/2	784 176
TWG009	2 securing brackets and 4 screws	G 3/4 - G 1	789 513
Spring for semi automatic		G 1/8 and G 1/4	784 167
		G 1/2	784 168
		G 3/4 - G 1	784 169
TWG012		G 1/2, G 3/4 and G 1	784 320
Discharge automaton, TWG010			784 320
Replacement filter 30 µm	all devices 0 - 10 bar	G 1/8 - G 1/4	784 191
	all devices 0 - 16 bar	G 1/4 - G 3/8	784 192
	all devices	G 1/2	784 193
	only for two-part maintenance device	G 3/4 - G 1	789 516
	only for one and two-part maintenance device	G 3/4 - G 1	789 516
Shut-off ball valve		G 1/4	784 400
		G 3/8	788 889
		G 1/2	784 426
		G 3/4	789 515
TWG007			

Miscellaneous accessories

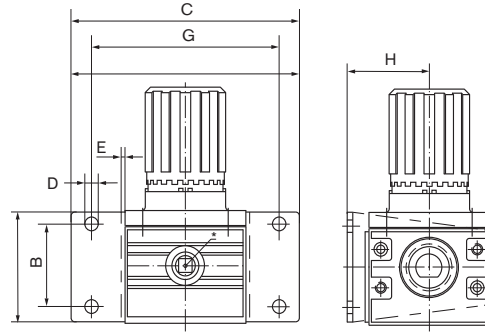
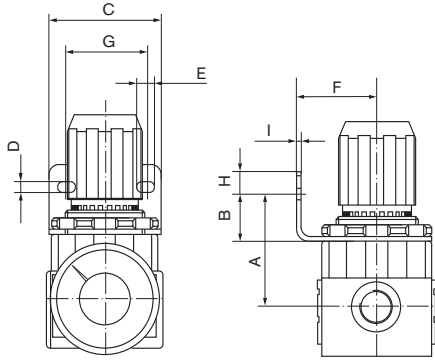
Accessory	Spare container for filters and filter controllers	Connection size	Item no.
Spare container for filters and filter controllers	784 138, 784 139, 784 145, 784 146	G 1/8" - G 1/4"	788 885
	784 140, 784 141, 784 147, 784 148	G 1/4" - G 3/8"	788 886
	784 142, 784 149	G 1/2"	788 887
TWG011	789 503, 789 504, 789 506, 789 505	G 3/4" - G 1"	789 518

Accessories - Dimensions [mm]

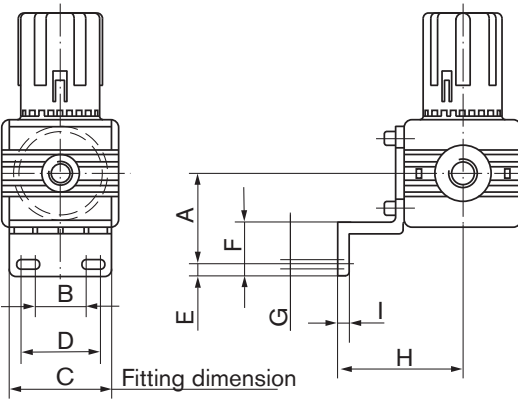
Securing bracket

0 - 10 bar
G 1/8, G 1/4 and G 1/2
TWG009

0 - 16 bar
G 1/4 to G 3/8
TWG009



Drilling diagram for securing bracket G 3/4 to G 1



Port connection	Input pressure [bar]	A	B	C	D	E	F	G	H	I
G 1/8	0 - 10	41	17	42	4.5	6.5	30	30	8	max. 3
G 1/4	0 - 10	41	17	42	4.5	6.5	30	30	8	max. 3
G 1/2	0 - 10	47	-	62	5.5	5.5	56	48	-	max. 3
G 1/4	0 - 16	37	23	45	35	6	23	4.5	52.5	5
G 3/8	0 - 16	37	23	45	35	6	23	4.5	52.5	5

Port connection G 3/4 and G 1	A	B	C	D	E	F	H
for 3-part maintenance devices	69.5	60	90	9	4	40	61
for 2-part maintenance devices	69.5	60	90	9	4	40	61
for 1-part maintenance device	69.5	60	90	9	4	40	61

To find your nearest Bürkert facility, click on the orange box

www.burkert.com

In case of special application conditions,
 please consult for advice.

Subject to alterations
 © Christian Bürkert GmbH & Co. KG

1103/2_EU-en_00895104